

# FONTANA

---

Model No. 1460

## DESIGN GEORG APPELTSHAUSER

A new generation of extendable dining tables. FONTANA combines the uniqueness of natural stone with the experience of an innovative synchronous mechanism. Unfold the table to a banquet – effortless and apparently magical. DRAENERT typical – the expressive, trapezoidal table top adds the finishing touch. The FONTANA has received four awards! The collection is complimented by a fix top version.

### FONTANA - Four times awarded

Check out the function as a [video!](#)

### AVAILABLE IN THE FOLLOWING MATERIAL VARIANTS:

Stone



## 1460 FONTANA

DIFFERENT VERSIONS OF THE BASE



table extendable

### base 1

#### side walls (standard)

solid oak  
cross section of side walls below 60.3 x 6.6 cm

space between the side walls 121.5 cm



table not extendable

solid oak  
cross section of side walls below 60.3 x 6.6 cm

space between the side walls  
with a table length of

160 cm = 80 cm  
180 cm = 90 cm  
200 cm = 100 cm  
220 cm = 120 cm  
240 cm = 130 cm  
260 cm = 150 cm  
280 cm = 170 cm



table extendable

### base 2

#### four legs (with surcharge)

conical legs solid oak  
cross section of legs below 9.3 x 6 cm

space between the legs below 147 cm



table not extendable

conical legs solid oak  
cross section of legs below 9.3 x 6 cm

space between the legs below  
with a table length of

160 cm = 132 cm  
180 cm = 152 cm  
200 cm = 172 cm  
220 cm = 192 cm  
240 cm = 212 cm  
260 cm = 232 cm  
280 cm = 252 cm

## FONTANA 1460

DIFFERENT SHAPES OF THE TABLE TOPS

### rectangular

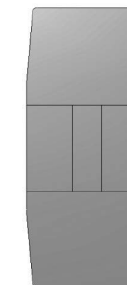
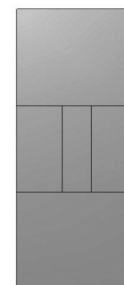
table  
not extended



### trapezoidal shape



table  
extended



Width of the table at the headside for table size:  
105 x 180 / 260 cm = approx. 94.6 cm  
105 x 200 / 280 cm = approx. 93.8 cm

table  
not extendable



Width of the table at the headside for table size:  
95 x 160 cm = approx. 86.8 cm  
105 x 180 cm = approx. 95.8 cm  
105 x 200 cm = approx. 94.5 cm  
105 x 220 cm = approx. 93.6 cm  
105 x 240 cm = approx. 92.6 cm  
105 x 260 cm = approx. 91.5 cm  
105 x 280 cm = approx. 90.4 cm







**1460 FONTANA**

NATURAL STONE

DESIGN GEORG APPELTSHAUSER / GINO CAROLLO 2014

**FONTANA 1460**

NATURAL STONE

	Model type	Pedestal base 1 side walls solid wood oak natural / pigmented white dark gray / dark oak standard	Size W - L - H approx. in cm	Top stone 2 cm edge 6 PG 2	Top stone 2 cm edge 6 PG 3	Top stone 2 cm edge 6 PG 4	Top stone 2 cm edge 6 PG 4a	Top stone 2 cm edge 6 PG 4b	Top stone 2 cm edge 6 PG 5	Top stone 2 cm edge 6 PG 6
 extendable	1460 dining table trapezoidal shape, rectangular <b>extendable</b> with integrated threefold extension stone 80 cm		105 x 180 x 74.5 extended 105 x 260 x 74.5							
	1460 dining table trapezoidal shape, rectangular <b>extendable</b> with integrated threefold extension stone 80 cm		105 x 200 x 74.5 extended 105 x 280 x 74.5							
 not extendable	1460 dining table trapezoidal shape, rectangular <b>not extendable</b>		95 x 160 x 74 105 x 180 x 74 105 x 200 x 74							
			105 x 220 x 74 105 x 240 x 74							
			105 x 260 x 74 105 x 280 x 74							
 base 1 - <b>standard</b> side walls in oak										
 base 2 four legs in oak										

**Price supplements for special orders:**

base 1 solid oak stained or open porous lacquered to RAL as desired  
base 1 solid American walnut

base 2 solid oak natural, pigmented white, dark gray, dark oak  
base 2 solid oak stained or open porous lacquered to RAL as desired  
base 2 solid American walnut



**1460 FONTANA**

DESIGN GEORG APPELTSHAUSER / GINO CAROLLO 2014

SOLID WOOD

**Model type****Pedestal**base 1  
side walls  
solid wood  
same as table top  
standard**Size**W - L - H  
approx. in cm

not extendable

1460 dining table  
trapezoidal shape, rectangular  
**not extendable**  
solid wood  
table top glued lengthwise

95 x 160 x 74

105 x 180 x 74

105 x 200 x 74

105 x 220 x 74

105 x 240 x 74

105 x 260 x 74

105 x 280 x 74

base 1 - **standard**  
side walls in oakbase 2  
four legs in oak

Please indicate in your order:

Wooden surface waxed (standard) or lacquered clear (same price).

**FONTANA 1460**

SOLID WOOD

**Top**solid wood 2.5 cm  
edge 6  
oak or wild oak  
natural / pigmented white / dark gray / dark oak**Top**solid wood 2.5 cm  
edge 6  
American walnut**Price supplements for special orders:**

base 1      stained or open porous lacquered to RAL as desired

base 2      solid oak natural, pigmented white, dark gray, dark oak

base 2      solid oak stained or open porous lacquered to RAL as desired

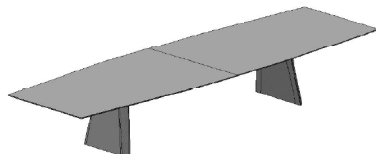
base 2      solid American walnut



## 1460 FONTANA CONFERENCE

DESIGN GINO CAROLLO 2018

### Informations on the FONTANA Conference System:



#### Dimensions

FONTANA Conference is an elegant conference and meeting table.  
As the top only rests on two wood-paneled side walls, the maximum dimensions are limited.  
Kindly ask for your preferred size.  
Due to the great number of variancies, we may not state any prices here.  
On the opposite page, you will find an overview of the variants in dimensions and bases.

#### Table top

We offer 150 different types of natural stones (page 4-5)  
as well as various veneered and solid wood types,  
Fenix or high-pressure laminate (HPL) depending on the table size.



#### Table top edges



edge 4



edge 5



edge 6

#### Table top shapes



rectangular



trapezoidal



boat-shaped



organic

#### Bases

**base 1 standard** side walls oak-paneled in:  
- oak natural, pigmented white, dark gray, dark oak  
- American walnut  
- lacquered to RAL  
cross section below 60.3 x 6.6 cm  
space between the side walls depending on table size

**base 1 reinforced** side walls oak-paneled in:  
- oak natural, pigmented white, dark gray, dark oak  
- American walnut  
- lacquered to RAL  
The internal construction and the interconnections are reinforced.  
cross section below 60.3 x 6.6 cm  
space between the side walls depending on table size

#### Attention!

The base structure of stone tops is equipped with a continuous metal frame.  
The metal frame is in width and length about 30cm shorter than the table top.

#### Options

We offer different systems for media flaps / service panels and cable routing for power and data connection.



#### Note:

Feasibility and prices on request.  
We will gladly design your custom-made conference table. Please feel free to contact us.

## FONTANA CONFERENCE 1460

Base	Top(s)	Width approx. in cm	Length approx. in cm	Height approx. in cm
------	--------	------------------------	-------------------------	-------------------------

base 1 standard	1	95 - 115	150 - 300	74
--------------------	---	----------	-----------	----



base 1 reinforced	2	95 - 130	280 - 480	74
----------------------	---	----------	-----------	----

