

# COLIN

---

Model No. 1325

## DESIGN STEPHAN VEIT

A coffee and side table with character. The COLIN skilfully plays with horizontal and vertical lines. The tabletop made of natural stone can be used alone as an eye-catcher or combined with a second level made of gray colored glass. It disappears discreetly in the round frame made of coated metal and makes the table look light.



**Model type**  
**Frame**  
bent steel sheet  
coated black  
**Size**  
W - L - H  
approx. in cm

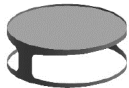
**Top**  
glass 10 mm  
colored glass  
brown or gray  
**Top**  
stone 2 cm  
PG 2 - 4b  
**Tops**  
upper and lower tray  
colored glass 10 mm  
brown or gray  
**Tops**  
upper tray  
colored glass 10 mm  
brown or gray  
lower tray stone 2 cm  
PG 2 - 4b  
**Tops**  
upper and lower tray  
stone 2 cm  
PG 2 - 4b



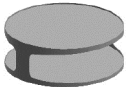
1325-I side table 50 ø x 45



1325-II side table with lower tray 50 ø x 45



1325-V coffee table 93 ø x 34



1325-VI coffee table with lower tray 93 ø x 34

Note:

1325-II / -VI On request as well upper top stone and lower top glass available. Please clearly indicate with your order.

**Price supplements for special orders:**

frame coated dark bronze  
frame coated gold-colored or nickel-colored  
frame lacquered to RAL  
  
stone PG 5+6 only when remnant plates in stock / tray  
(surcharge on stone PG 2 - 4b)  
side table  
coffee table

